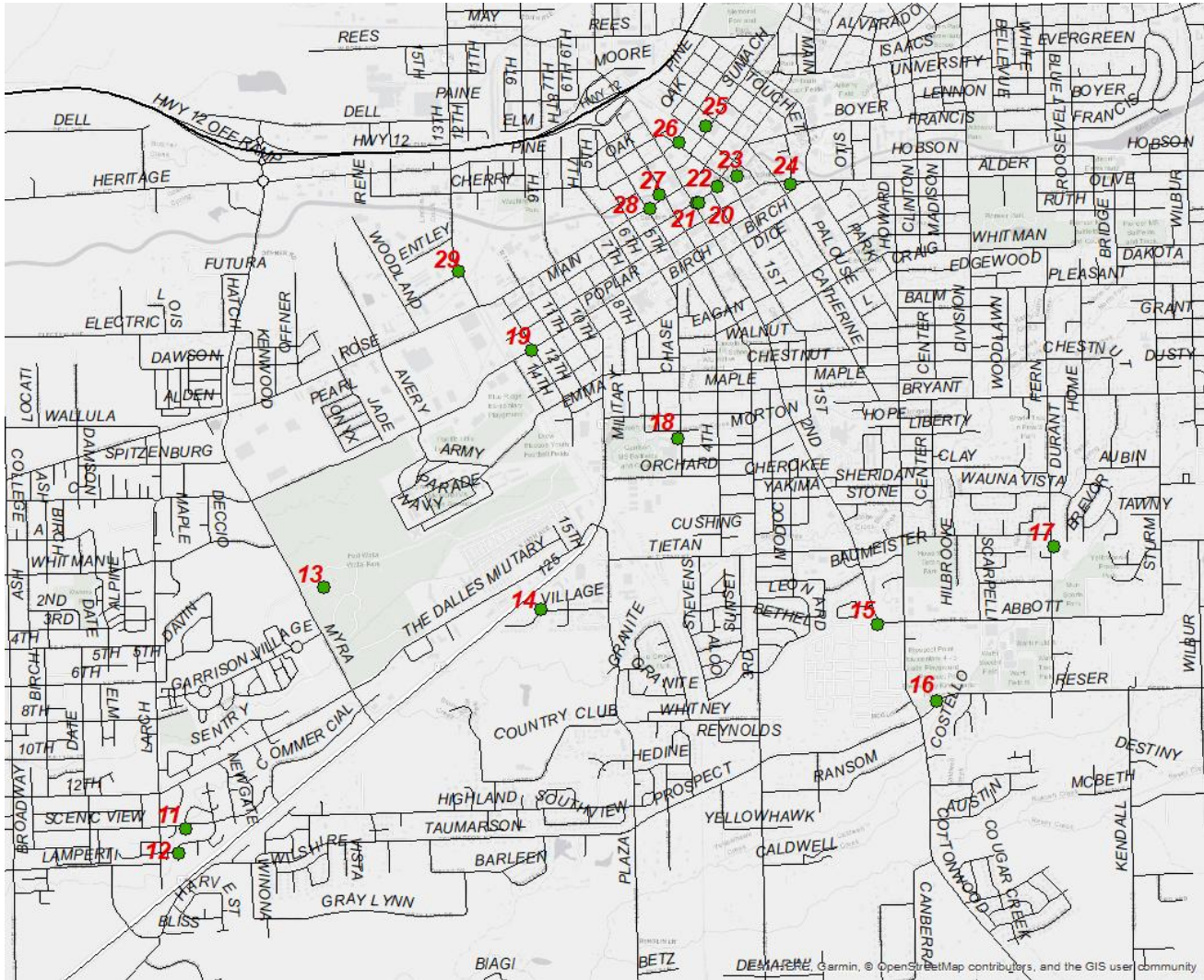


CITY OF WALLA WALLA
AND COLLEGE PLACE
HISTORIC SITES

See other side for more
Walla Walla County
Historic Sites



For more information on many sites, visit www.ww2020.net/historic-sites, which includes an interactive map and list of over 275 historic residences and buildings in Walla Walla County with photos and the histories of each property, a list of National Historic Register properties in Walla Walla County, and a request form for a building report and plaque for additional historic properties.

WALLA WALLA AND
COLLEGE PLACE
HISTORIC SITES

- #11 County Poor Farm, 924 SE Scenic View Drive, College Place, poor farm house, signage
- #12 Poor Farm Cemetery, Mockingbird & Sandpiper, College Place, signage, markers
- #13 Fort Walla Walla, 1858, 755 Myra Road, museum, cemetery, pioneer & military buildings & grounds
- #14 McCool Catholic Cemetery, Village Way, west of Fairway, signage
- #15 Mt. View Cemetery, 2120 S. Second, walking tour with online brochure
- #16 Prospect Point School, 55 Reser Road, signage
- #17 Stubblefield Home, 1919 Fern, signage
- #18 Germantown, 906 Chase, signage, walking tour with online brochure
- #19 Village of Halfway, 12th & Poplar, signage
- #20 Town of Walla Walla, 2 East Main, signage
- #21 State Constitutional Convention, 4 E. Main, Reynolds-Day Building, 1878, signage
- #22 Fort Walla Walla, 1856-58, signage
- #23 Heritage Park, 114 W. Main, murals, visual history of Walla Walla, Edgewater Park Dance Pavilion signage
- #24 Treaty Council of 1855, Palouse & Alder, signage behind Carnegie building
- #25 Baker School, signage on Sumach between Palouse and Spokane
- #26 Kirkman House Museum, 214 N. Colville, Victorian cultural displays
- #27 Peopemoxmox Statue, Rose at Third, signage
- #28 Chinatown, Rose at Fourth, signage
- #29 Mullan Road Historic Site, 13th & Abadie, signage

WALLA WALLA
COUNTY
HISTORIC SITES

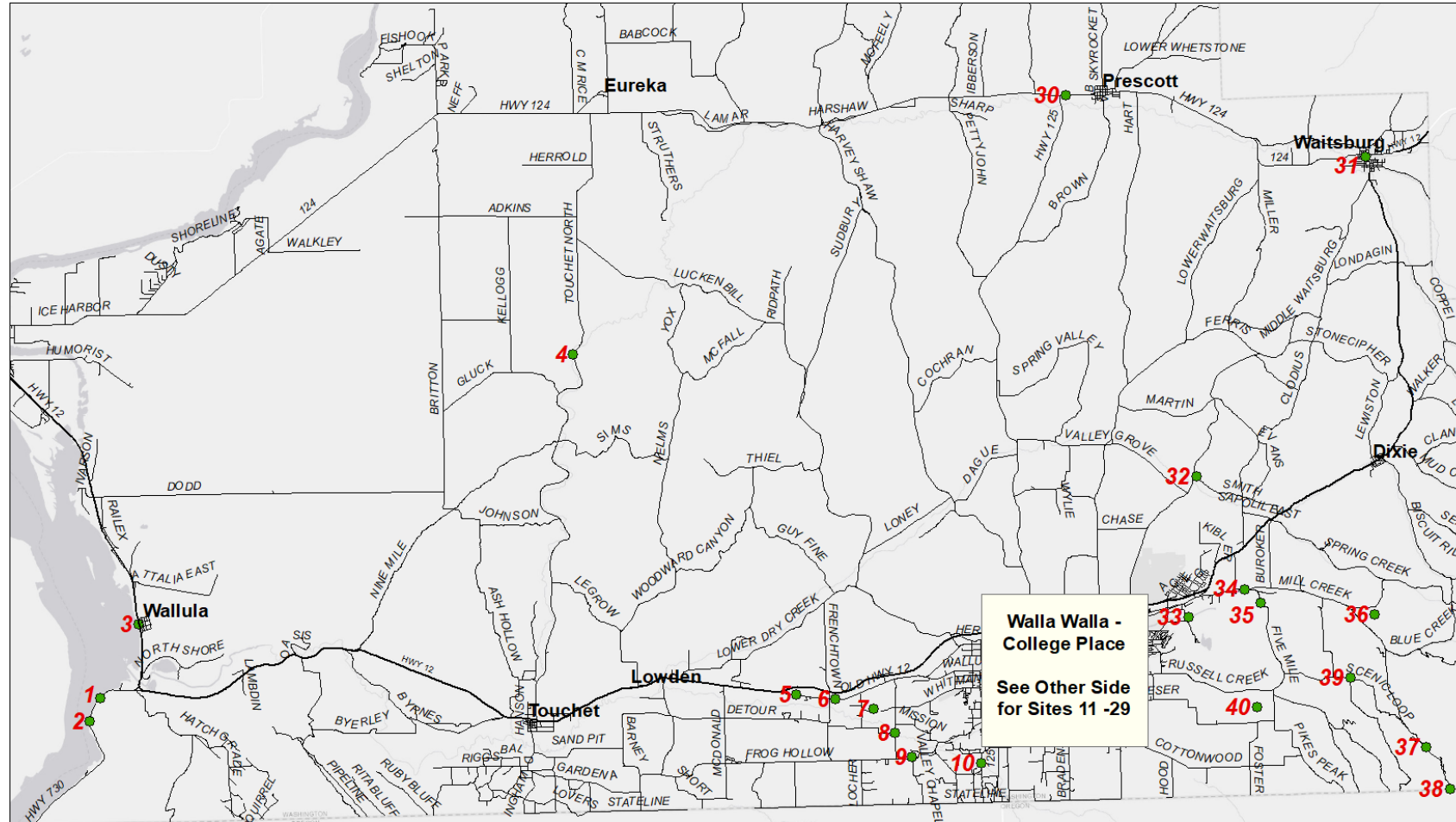


*telling the stories
and marking the sites of
significant Walla Walla history*

PO Box 1222, Walla Walla WA 99362
509-522-0399
ww2020@charter.net
www.ww2020.net/historic-sites

WALLA WALLA COUNTY HISTORIC SITES

Walla Walla County has a fascinating history, including ancient geology, gathering places and settlements of indigenous people, the visits of Lewis & Clark, a Hudson Bay Company fur trading post, Indian councils and wars, the influx of immigrants, the building of military forts, towns, and a steamship port, outfitting of a gold rush, the first railroad in the region, and more. The goal of this brochure is to guide you through many interesting sites in Walla Walla County to help you experience these special places first-hand.



Index numbers for the map above begin at Wallula Gap, where much of the Walla Walla area's history began, and move east to the vicinity of Frenchtown and the Whitman Mission where early relations between tribal members and Euro-Americans were also centered, then on to the cities of Walla Walla and College Place, before heading north along the Mullan Road to Prescott, and from there to Waitsburg, before returning south to the historic sites leading to the mountains east of Walla Walla.

WALLA WALLA COUNTY HISTORIC SITES INDEX

- #1 Wallula Historic Site**, MP 4.8, US 730, including geology, native peoples, Lewis & Clark, fur traders, steamships, railroads, towns, Lake Wallula, hikes
- #2 Twin Sisters Monument**, MP 4.2, US 730, including Indian legends, hikes
- #3 Fort Nez Perces/Fort Walla Walla**, MP 306, US 12, signage
- #4 Capture of Chief Peopeomoxmox, Lewis & Clark campsite**, near 12650 Touchet Road North, signage
- #5 Frenchtown Historic Site**, 8364 Old Hwy 12, including native peoples, fur trade families, Saint Rose Mission & cemetery, Battle of Walla Walla, landscape & wildlife, Prince's Cabin, signage, hikes
- #6 Whitman Station, Tellier Cabin Site**, near 7246 Old Highway 12, signage including Battle of Walla Walla, Oregon Trail, Baker Railroad
- #7 Whitman Mission National Historic Site**, 492 Whitman Mission Road, interpretive displays,, gravesites, trails, native & immigrant culture
- #8 Cayuse Village at Wailatpu**, near 1546 Last Chance Road, signage
- #9 Valley Chapel Cemetery**, Frog Hollow & Valley Chapel Roads
- #10 St. Rose of Cayouse Mission**, near 2904 Old Milton Highway, signage
- #11-29** See other side for Walla Walla and College Place sites
- #30 Halfway House on the Mullan Road**, MP 35, SR 124 east of junction with SR 125, west of Prescott, signage including native peoples & Lewis & Clark
- #31 Bruce Memorial Museum**, 318 Main Street, Waitsburg, 1883 Victorian mansion
- #32 Rosehill (Buroker) Cemetery**, Smith Road east of Middle Waitsburg Road
- #33 Stevens Skirmish, 1856**, near Bennington Lake, signage on Mill Creek levee, Kingfisher Trail, east of Corps office, near 3240 Reservoir Road
- #34 Civilian Conservation Corps, Camp Walla Walla**, 1494 Mill Creek Road, signage
- #35 Treaty Council of 1856**, near 562 Five Mile Road, signage including first military Fort Walla Walla
- #36 Lyons (Mill Creek) Cemetery**, north of Mill Creek Rd and east of Meiners Road
- #37 Marcus Whitman Sawmill**, near 9425 Mill Creek Road, signage
- #38 Upper Mill Creek History Site**, signage at Camp Kiwanis on Mill Creek Road at stateline, including Mill Creek Flume & Railroad, Klicker Springs Hotel & Spa, China Canyon, Kooskooskie, and Camp Kiwanis
- #39 William Davies Community**, Scenic Loop at Mormon Grade, signage including the Davies religious commune and the Walla Walla Jesus
- #40 Stubblefield Cemetery**, near corner of Foster and Reser Road

For more information, visit www.ww2020.net.