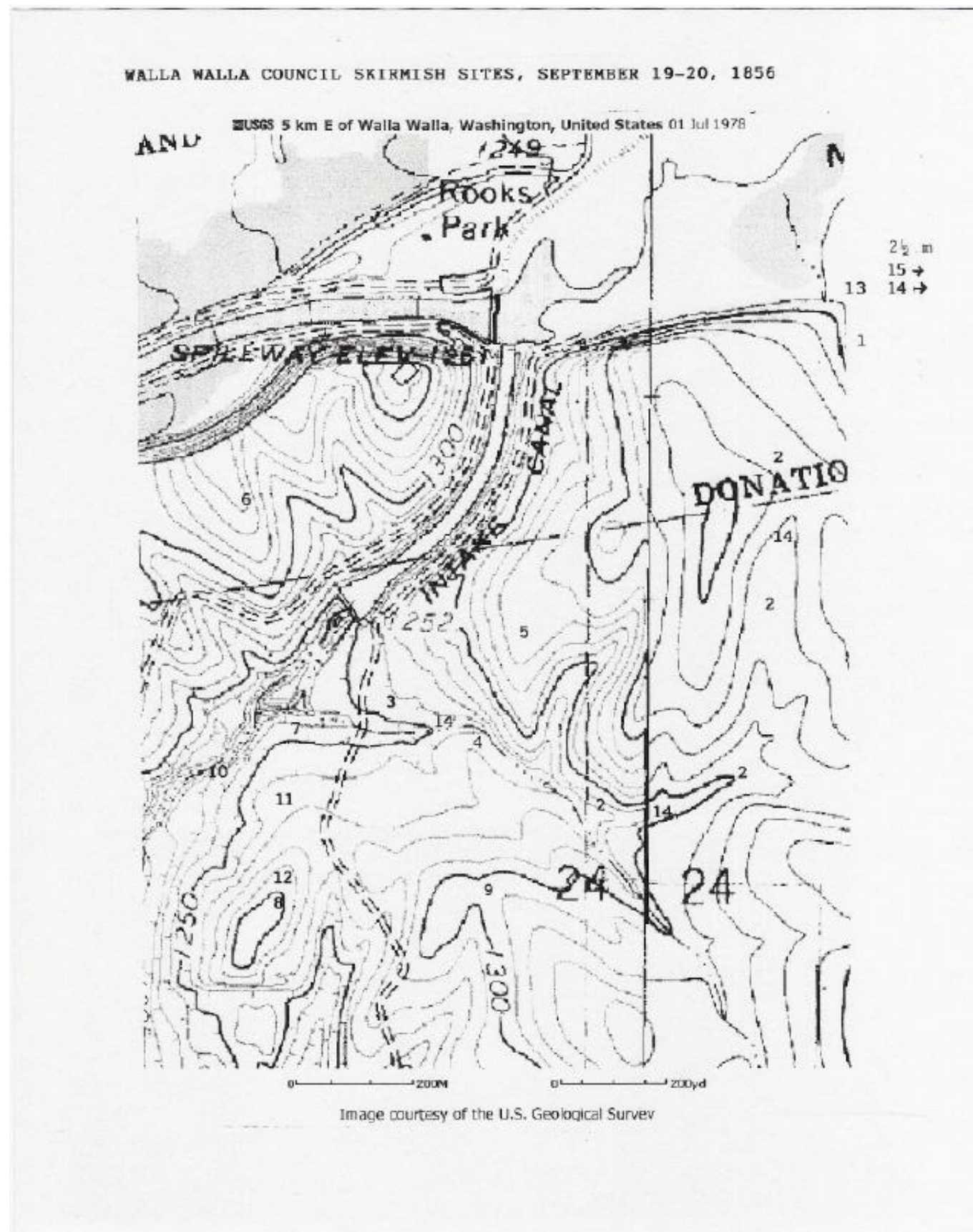


STEVENS SKIRMISH MAP

Fifteen points of activity were described by participants in the September 19-20, 1856 attack on the party of Governor Isaac Stevens in the vicinity of Mill Creek in the Walla Walla Valley:

1. The point where the Stevens party crossed a stream not more than three miles after leaving Steptoe's camp and was first attacked.
2. The course of the train from the initial point of attack to where a corral was formed.
3. The place where the wagons halted and the corral was formed.
4. The site of the first Volunteer charge, led by Lt. Hunter.
5. The east hill where Lt. Hunter retreated after the first charge, and pickets were established by the Volunteers
6. A second hill where pickets were established by Volunteers to protect the corral.
7. The area where Volunteer pickets were placed in the brush. 8. The hill where the second Volunteer charge took place.
9. Where Indian spectators were located to the left of the south hill.
10. The area where Elijah Hill, Co. K, was killed.
11. The area where Sgt. C. Riggs, Co. K, was gravely wounded. 12. The hill where Volunteer rifle pits were dug in, abandoned, then retaken.
13. The area where Steptoe's troops fired the howitzer as they approached the corral.
14. The course of the train during its return from the corral to Steptoe's camp.
15. Steptoe's camp further up the Mill Creek Valley where the final skirmishes occurred on Sept.20.



. For participant descriptions of each of the skirmish points, visit www.ww2020.net/historic-sites.

Sign courtesy of Walla Walla 2020